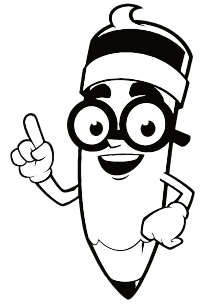


Basic Strokes



Trace the stroke lines & practice

Tracing practice area with five rows of handwriting lines (top solid, middle dashed, bottom solid). Each row contains three dashed examples of a stroke with directional arrows and starting dots.

- Row 1: Three dashed uppercase 'C' shapes. Each starts with a dot on the top line and an arrow pointing right. The stroke curves down and back up to the top line.
- Row 2: Three dashed lowercase 'c' shapes. Each starts with a dot on the middle dashed line and an arrow pointing right. The stroke curves down and back up to the middle dashed line.
- Row 3: Three dashed uppercase 'C' shapes. Each starts with a dot on the top line and an arrow pointing left. The stroke curves down and back up to the top line.
- Row 4: Three dashed lowercase 'c' shapes. Each starts with a dot on the middle dashed line and an arrow pointing left. The stroke curves down and back up to the middle dashed line.
- Row 5: A continuous dashed wavy line starting from a dot on the bottom line with an upward arrow. It moves up to the top line, curves down to the middle dashed line, curves up to the top line, and repeats this pattern three times.